



# COMMUNITY NETWORK BUILDING THROUGH RESEARCH

**Melinda Villagran, Ph.D.**

Executive Director, Translational Health Research Center

**Joshua J. Daspit, Ph.D.**

Director, SCALEUP

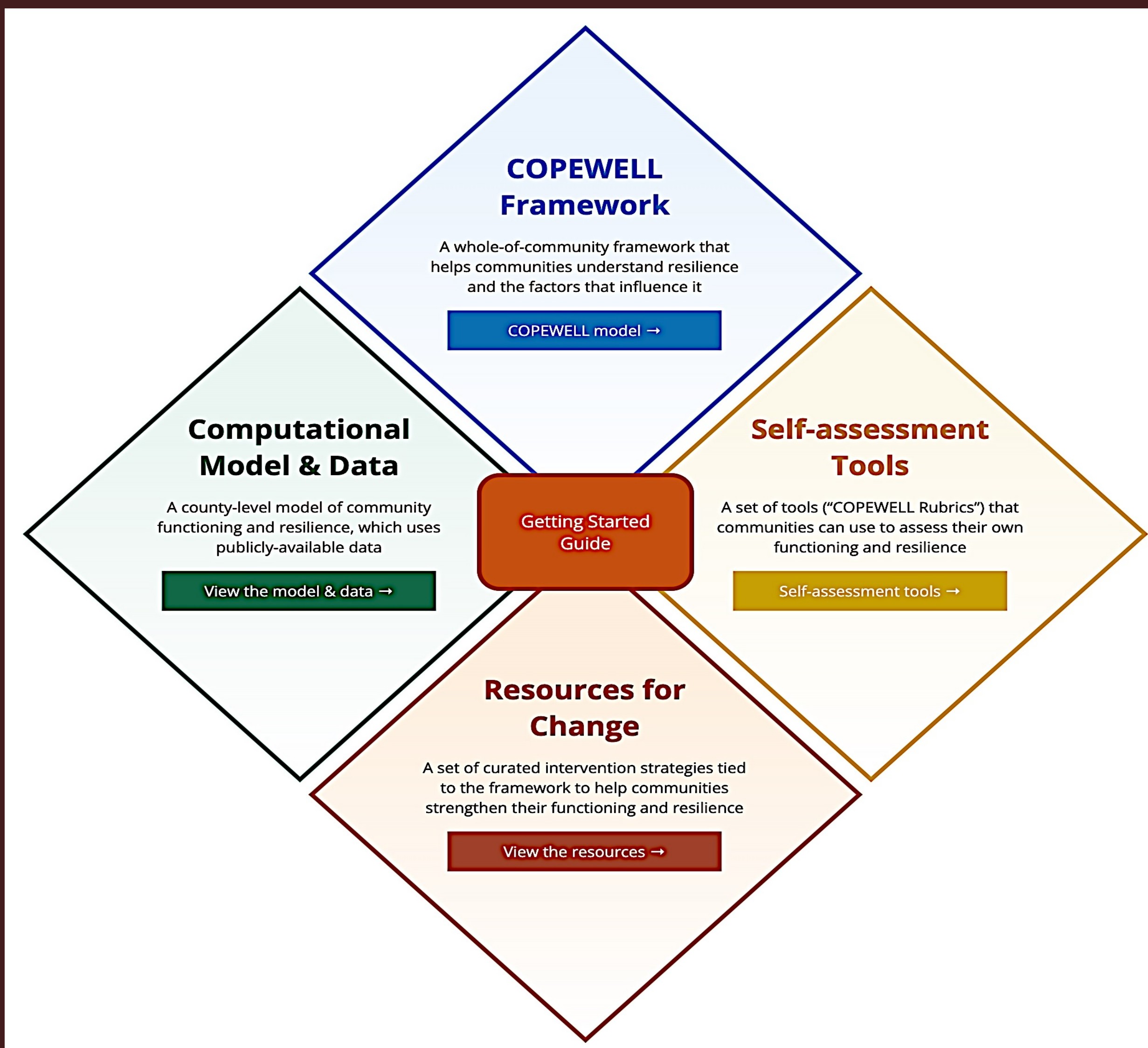
TEXAS  STATE  
UNIVERSITY<sup>®</sup>

MEMBER THE TEXAS STATE UNIVERSITY SYSTEM



# Community Network Building Through Research



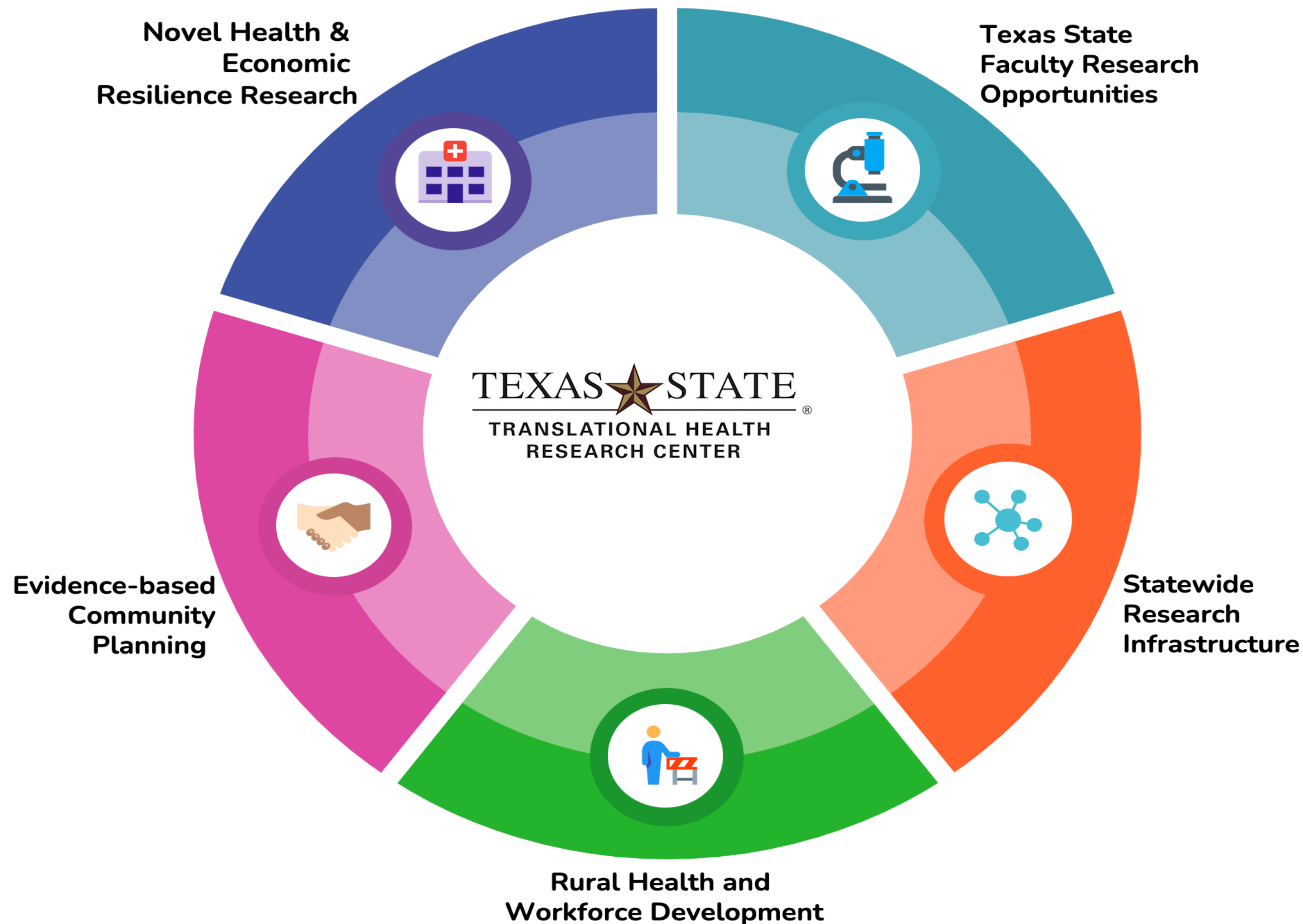


## THRC+CHERR Mission & Goals

## Partnership Opportunities

## Project Components

## Next Steps



# **THRC/CHERR: Fostering Healthy+Resilient People and Places**



# COPEWELL

## What If You Could Predict Community Resilience?

The **Composite of Post-Event Well-Being** (COPEWELL) is an evidence-based model and collection of tools that fosters a community-wide understanding of the complex nature of community resilience as it pertains to disasters. It uses data-driven tools to assess community functioning and predict resilience, and provides resources that communities can utilize to address identified gaps to improve community functioning before, during, and after disasters.

Source: [www.copewellmodel.org](http://www.copewellmodel.org)



# COPEWELL Research Partnership

## Partners: John's Hopkins Center for Health & Security, Texas State Library and Archive Commission (TSLAC)

- Monica Schoch-Spana - Texas State Faculty Member and Senior Scholar at JHU
- Rex Long, Doctoral Student in Anthropology
- Maria Freed – TSLAC

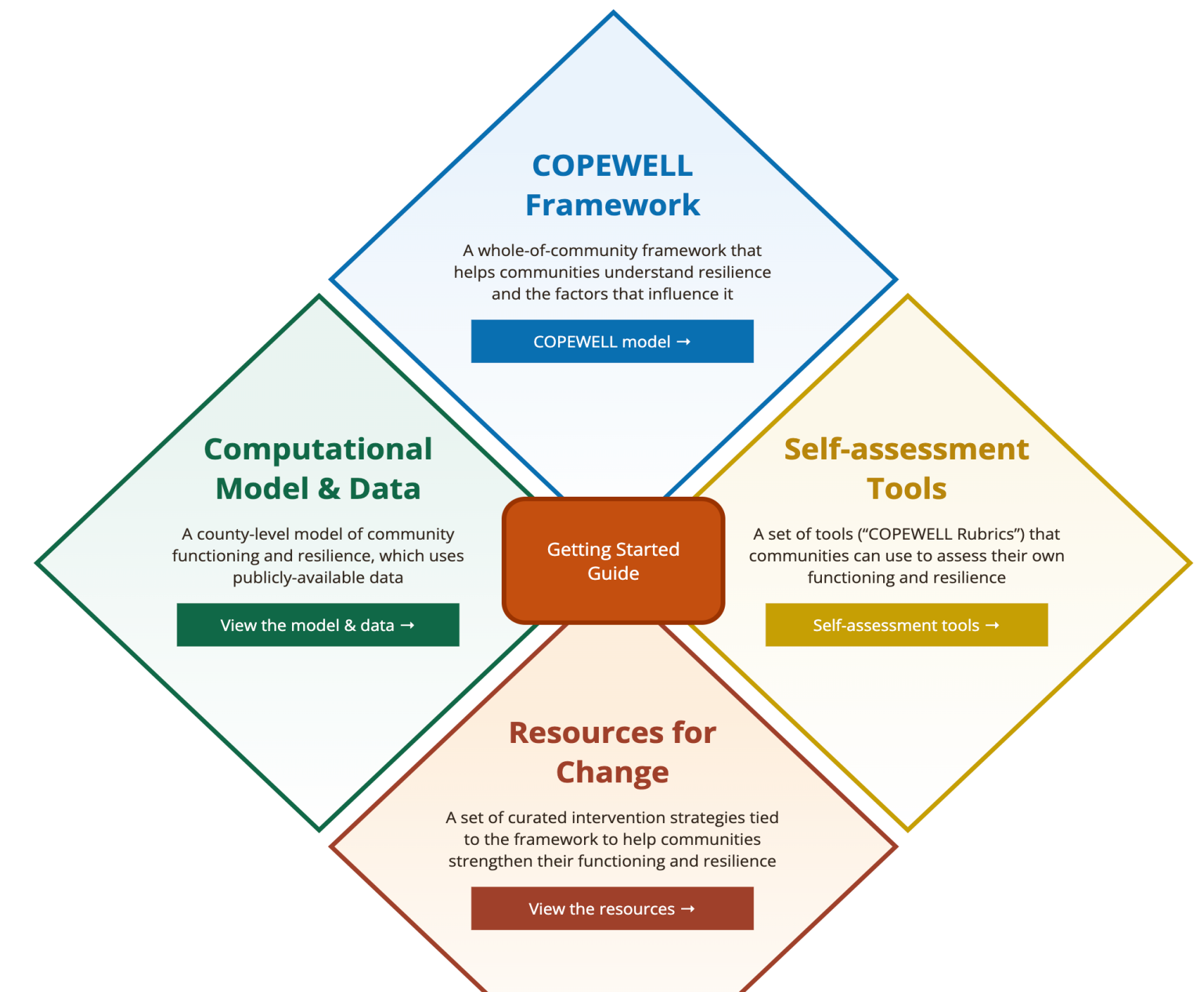
## Research Design Fall 2022

- THRC hosts national Town Hall to share COPEWELL,
- Provide sustainability plan for JHU COPEWELL grant
- Raise visibility of Texas State and THRC resilience research
- Build relationships with Town Hall participants from potential Texas research partner organizations

**RESULT:** TSLAC identified as statewide pilot project partner

## Spring 2023

- Select Elizabeth Eger, Faculty Fellow/PI & Texas COPEWELL communities
- Empower and support librarians to convene local COPEWELL community coalition
- Assess application of COPEWELL to build resilience in Texas communities





# THRC COPEWELL RESEARCH TEAM



**ELIZABETH EGER**

2023-24 THRC Faculty Fellow

PI, COPEWELL Library

Coalition Research



**REX LONG**

THRC Doctoral  
Research Assistant

JHU Liaison, Town Hall,

Co-PI, Pilot Project



**JESSICA SCHNEIDER**

THRC Faculty Fellows Director

Co-Lead, Town Hall and

Pilot Project



**MELNDA VILLAGRAN**

THRC Executive  
Director

Town Hall and Pilot

Research Co-PI





# SCALEUP

TEXAS STATE UNIVERSITY



# BACKGROUND

- The number of minority entrepreneurs has grown substantially in the US
- Once created, MOBs tend to start small and stay small
- Existing research on startups but less growth; even less on MOB growth
- Why do MOBs not scale at the same rate?

3 Orozco, M., Tareque, I. S., Oyer, P., & Porras, J. I. (2021). 2020 State of Latino Entrepreneurship. Stanford Latino Entrepreneurship Initiative. <https://www.gsb.stanford.edu/sites/default/files/publication-pdf/report-2020-state-of-latino-entrepreneurship.pdf>.

# \$6

TRILLION ADDED  
TO THE US ECONOMY



# 21

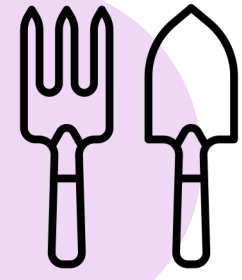
MILLION NEW JOBS



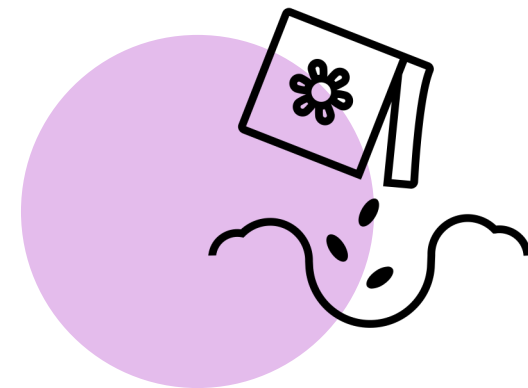
U. S. Department of Commerce. (2022). Fact Sheet: All Minority-Owned Firms. <https://www.mbda.gov/economic-impact->



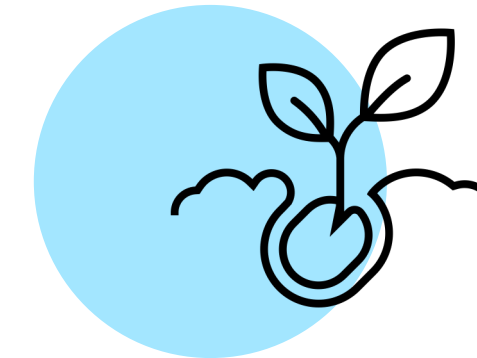
# BACKGROUND



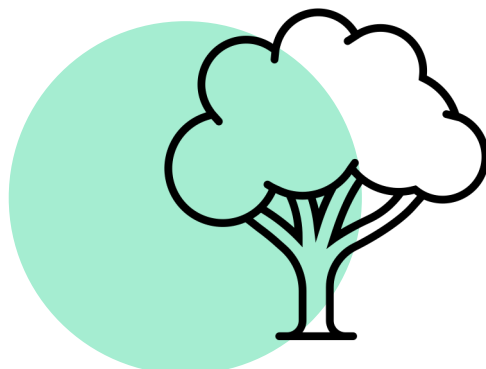
**BIG IDEAS**  
TEXAS STATE UNIVERSITY  
PART 2  
Proposal Accepted  
Fall 2020



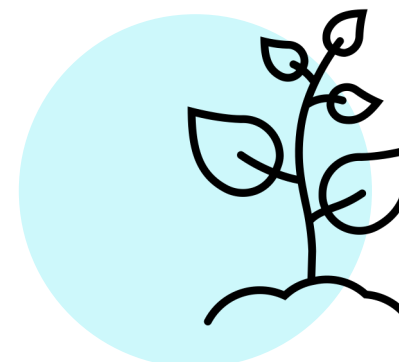
 **Frost**  
Initial Funding Received  
Fall 2021



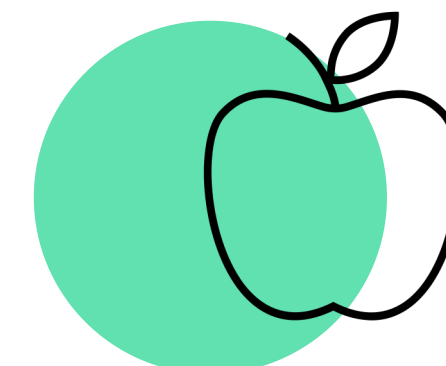
**Research Fellows**  
Initial Investigation  
2022



**TEXAS STATE**  
TRANSLATIONAL HEALTH  
RESEARCH CENTER  
Collaboration &  
Fellowship Began



 **TAMACC**  
ADVOCACY • COMMERCE • LEADERSHIP  
Partnership Developed  
(Official MOA w/ TXST)



 **EWING MARION  
KAUFFMAN  
FOUNDATION**

Supporting Program Expansion  
Began in 2023



## RESEARCH SUPPORT

- Fellowship
- Offered support for long-term research success
- Develop a network of small businesses
- Great idea...but how?



# GRIT Awards

Recognizing Great Resilience in Texas





GRIT SHOWCASE  
REGISTRATION

# GRIT AWARDS

- Small businesses nominated from across Texas
- Panel of judges
- 3 winners + 4 other awards
- Winners receive trophy, certificate, press releases, and professional video of their business
- Join us for the GRIT Awards Showcase  
Tuesday, April 25 @ 3:00 pm  
Zoom







# COMMUNITY NETWORK BUILDING THROUGH RESEARCH





**CENTER FOR INNOVATION  
+ ENTREPRENEURSHIP**  
TEXAS STATE UNIVERSITY



# COMMUNITY NETWORK BUILDING

“Rising tide lifts all boats”

- **SHARED OUR CONNECTIONS**
  - Created new connections
- **SHARED RESEARCH IDEAS**
  - Ideas were expanded
- **RECOGNIZED BUSINESSES**
  - Joined research network
- **CREATED GRIT AWARDS**
  - Helps TXST brand recognition (small businesses)







# HOW ARE YOU BUILDING NETWORKS TO ENHANCE RESEARCH?

TEXAS  STATE  
UNIVERSITY<sup>®</sup>

MEMBER THE TEXAS STATE UNIVERSITY SYSTEM



## GRIT SHOWCASE



## SCALEUP UPDATES

